
LET'S BUILD
FUTURE SHIPS TOGETHER!



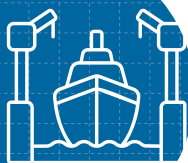
SHIPBUILDING

www.wsy.lt

MORE THAN 450 HIGHLY
SKILLED EMPLOYEES



HIGH QUALITY AND
ON-TIME DELIVERIES



50.000 M² TOTAL COVERED PRODUCTION
AREA AND 25 HA TOTAL TERRITORY



PART OF WESTERN SHIPYARD GROUP



ABOUT THE COMPANY

Western Baltija Shipbuilding is a modern shipyard offering full range of services from conceptual design to “turn-key” solutions. Company is a part of Western Shipyard Group which belongs to the biggest Estonian corporation – BLRT Grupp.

The main direction of Western Baltija Shipbuilding strategy is building steel blocks, hulls and “turn-key” vessels. Our team offers accumulated experience and new ideas, which are recognized and valued by our world-known customers.

Western Baltija Shipbuilding (WBS), having implemented a huge number of different projects, is one of the most experienced shipyards in the Baltic region. Ice-free Klaipėda port allows uninterrupted business operations all over the year. High quality and on-time deliveries are secured by more than 450 highly skilled employees whose training and professional development is constantly being improved.

OUR PRODUCTS

- » Steel Blocks and Hulls
- » Fishing Vessels
- » Multipurpose Vessels
- » Car and Passenger Ferries
- » Escort and Harbor Tugs
- » Specialized Vessels (Dredgers, Supply Vessels, Research Vessels)
- » Offshore Jack-ups and Platforms

The Company is certified with quality management system ISO 9001, environment protection management system ISO 14001, ISO 45001, NATO quality assurance certificate AQAP 2110 Addition D Ver 1, and risk assessment program (grade C) – JH143.



Total territory
25 ha



Total covered
production area
50.000 m²



Workshop
dimensions LxB
279x180 m

STEEL BLOCKS

Accommodation Blocks



Outfitted Hull Blocks



Hull Blocks



HULLS

Fishing Vessel Hull



Dredger Hull



Navy Vessel Hull



FISHING VESSELS

Christina E



Gitte Henning



Carmona



CAR AND PASSANGER FERRIES

Skarven



Ro-Pax Ferry Klaipeda



NB64



SPECIALIZED VESSELS (DREDGERS, SUPPLY VESSELS, RESEARCH VESSELS)

Dredger MACUTI



ECO Tug Svitzer GEO



Research Vessel MINTIS



OFFSHORE JACK UPS AND PLATFORMS

WindLift1

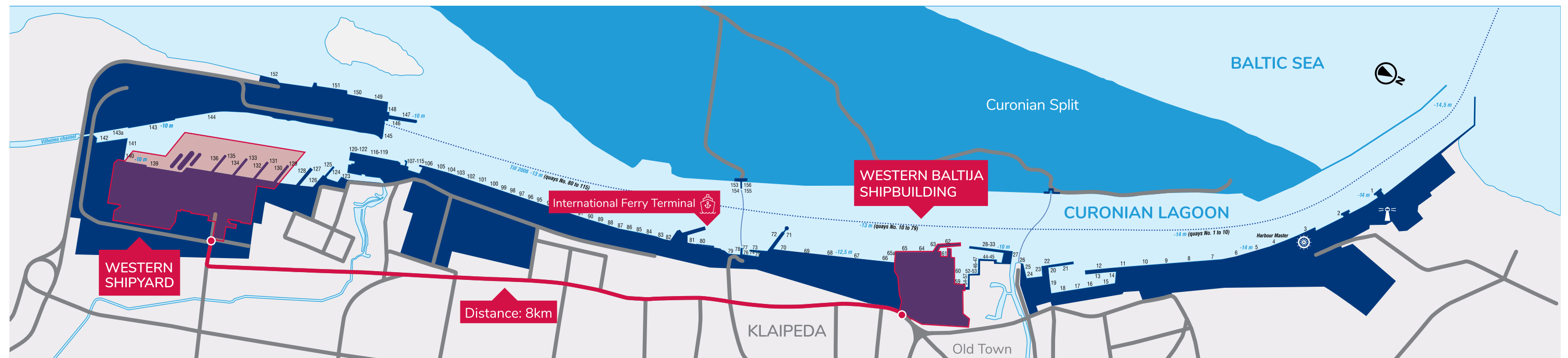


BARD 1



Odin





CAPABILITIES

- A** Blasting/painting chamber 1 & 2
35 x 17 x 30 m
- B** Blasting/painting chamber 3
35 x 17 x 30 m
- C** Hydraulic lifting transporters 160 & 550 TLC
- D** Volume section welding robot
- E** Flat section assembly line
- F** Heavy duty transport system
- G** Storage area
- H** Loading onto barge

OTHER

- I** Administration
- J** Rest area
- K** Gym

MAIN AREAS

- 1** Production preparation area
- 2** Micro panel line
- 3** Section assembly area
- 4** Curved section assembly area 200m
- 5** Volume blocks assembly area
Gates dimensions (HxB) 10 x 18m & 14 x 18m
- 6** Grand blocks assembly area
LxBxH = 170x21x20m
- 7** Mega blocks assembly area
- 8** Ship's hull preparation area
LxBxH = 120x21x23 m
- 9** Outfitting and launching area 200 m
- 10** Launching dock
Floating dock for launching ships up to 130x20 m,
2800 TLC
- 11** Outfitting and quay trial area



WESTERN BALTIJA SHIPBUILDING

Pilies st. 8, LT-91503 Klaipeda, Lithuania

+370 46 398 249, +370 46 398 119

+370 46 398 200

newbuilding@wsy.lt

www.wsy.lt

